



<p>+</p> <p>“Architecture is a social act and the material theater of human activity.”</p> <p>--Spiro Kostof</p>		

Facilities and Transportation for MA Charter Schools

A Collaboration between MCCPSE and reDESIGN
2008-2009

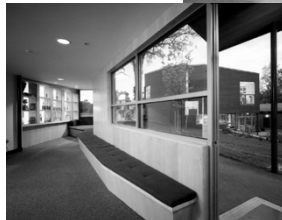
<p>+</p> <h2 data-bbox="386 1224 591 1276">Agenda</h2> <ul data-bbox="391 1308 786 1577" style="list-style-type: none">■ What kind of facility do you need? What should it have?■ Where/how will you find it?■ How will you finance it?■ What transportation services will you provide?	 
----------------------------------------------------------------------------------------------------------------------------------------------------------------------------------------------------------------------------------------------------------------------------------------------------------------------------------	-------------------------------------------------------------------------------------------------------------------------------------------------------------------------------

What kind of facility do you need:

- An average of 80-115 sq. ft. per pupil will give you an adequate (not roomy) facility.

+ Design Principles to consider:

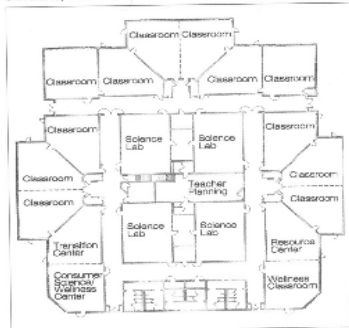
- Consider Home as a Template for School
- Meander circulation while ensuring supervision: create space in the “hallways” for learning, talking, meeting.



+ Design Principles to consider:

- Cluster Instructional Areas
- Design for a Variety of Learning Groups & Spaces
- Provide Studios to Support Project-Based Learning

Instructional Pod, Cleveland Middle School,
Cleveland, Tennessee



+ Design Principles to consider:

- Treat Teachers as Professionals
- Provide Space for Sharing Instructional Resources:
<http://www.choiceliteracy.com/members/207.cfm>
- Encourage Admin. Leadership by Decentralizing Admin. Space...and make it visible



+ Design Principles to consider:

- Weave together virtual and physical learning spaces
- Allow for Community Conferencing Space



+ Design Principles to consider:

- Provide Parent Information centers
- Provide Health Care Service
- Go Green



A revamped warehouse in Watertown's Industrial Area: The Atrium School




A drought-resistant/insulating roof: for teaching and energy efficiency: Tarkington ES, Chicago


+ Where do you find a facility?

- Commercial Real Estate Agents
- Real Estate Ads
- Old Parochial Schools
- Drive around Industrial neighborhoods looking for rentable space
- Shared space in educational or social service program
- After you identify potential space, visit it to get a sense of whether it could really work.

+ What kinds of facilities do C.S.s Use?

- Hotels (can't remember which school started out here)
- Warehouses (Abbey Kelley Foster)
- Office Buildings (Excel, Boston Collegiate's 1st site)
- Parochial Schools (Phoenix Charter, Boston Prep.)
- Shared space in a Nursing Home (Roxbury Prep)
- Old Factories (APR)
- A mix of neighborhood buildings: a house, health center, an adult education program (Codman Academy)
- Shared space in a YMCA (City on a Hill's 1st site)
- Shared space in a Temple (MATCH's first site)

<p>+</p> <p>What kind of facility will help you fulfill your mission/vision?</p> <p>Task:</p> <ul style="list-style-type: none">•Review Excel Academy’s Floor Plan and Document on Space Needs (hard-copy)•Review the Needs Assessment Worksheet (hard-copy)•Begin outlining your mission-driven hopes for your facility.	
------------------------------------------------------------------------------------------------------------------------------------------------------------------------------------------------------------------------------------------------------------------------------------------------------------------------------------------------------------------	-------------------------------------------------------------------------------------

<p>+ Financing your Facility</p> <p>Charter Schools get up and running with a leased building.</p> <p>Schools spend between 10-20% of their revenue on facility expenses</p> <p>You don’t need to have the financing fully figured out for the application!!</p>	
-------------------------------------------------------------------------------------------------------------------------------------------------------------------------------------------------------------------------------------------------------------------------	---------------------------------------------------------------------------------------

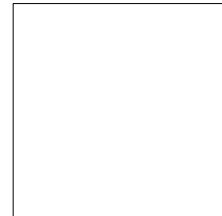
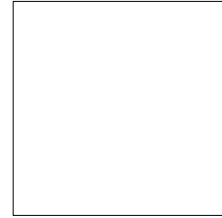
+ Facility Financing

Task:

•Review:

- Materials and Model Charter Applications on the re(DESIGN) site: http://www.redesign.us.com/re%28DESIGN%29/Facilities_and_Transportation.html.
- Salem Facility Plan and Budget (hard-copy)
- DESE's Charter School Opening Procedures Handbook: p. 21-22 (hard-copy)

•Begin mapping out the facility section of the application



+ Transportation

District Charter Schools:

- The district is required to provide transportation.
- District's generally accommodate their own students/schools first.

Regional Charter Schools:

- The district where the school is located is required to provide transportation, none of the other districts have any responsibility for this.



+ Transportation

Types of Transportation CS's Provide:

- None (Prospect Hill)
- Subsidized/Paid for by Families (PVCI, PVPA)
- Late bus for students staying for after-school programs, tutoring, etc. (APR)
- Town-center busing (BArT)
- School Funded-Busing (Roxbury Prep)
- Organized Car-Pooling (Four Rivers, BArT)



+ Transportation

Tasks:

- Review
 - CS Transportation document (hard-copy)
 - MA DESE Transportation Technical Advisory (hard-copy)
 - Appendices R & U of the DESE's Charter School Opening Procedures Handbook
- Begin mapping out the transportation section of the application (this is only 1-2 short paragraphs)

